



ERM-DAU-LV Active Circuit Transmitter

Overview

The Active Circuit Transmitter (ACT) option allows a remote circuit to influence the function of the CERV, much like the hardwired Auxiliary Input(s). Once the ACT is installed, powered, and paired with the CERV, its functionality can be programmed.

When the circuit is “active”, the ACT will periodically send a signal to the CERV indicating that the circuit is on. In most cases, this will cause the CERV to suspend its current activity based on internal sensors, and instead enter the mode specified by the device’s configuration. After installation, ensure that the ACT is unpowered (as evident by LEDs) when the load is off.

Recommended Installation: to minimize signal interference, these should be installed in nonmetallic junction boxes.



Any electrical work should be performed by a qualified installer or electrician. Follow all electrical codes applicable in the location of installation.

Specifications

	ERM-DAU-LV
Power Supply	24V AC/DC
Power Consumption	0.6 W

Radio Frequency	902MHz
Transmission Range	24m (80ft) indoor typical, 100m (330ft) line of sight

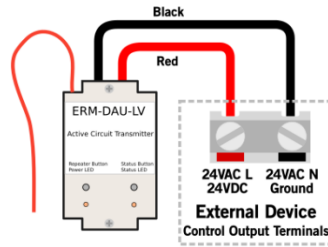
Weight	56.7g (2oz)
Dimensions	56 x 38 x 26 mm (2.2 x 1.5 x 1.0 in)

Agency Listing and Compliance
FCC Part 15.231 - Remote Control Transmitter IC RSS-210



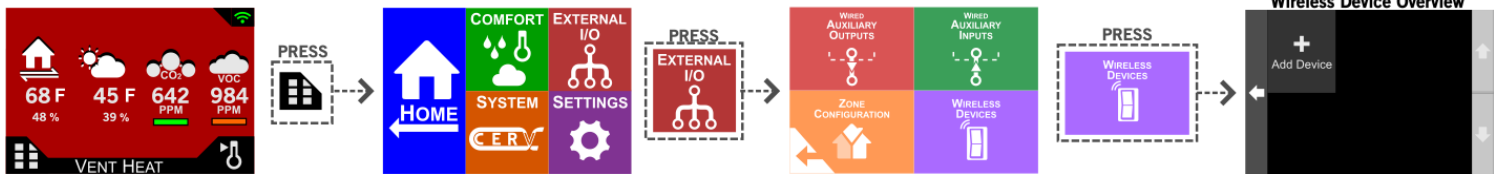
Electrical Wiring

ERM-DAU-LV 24V AC/DC Active Circuit Transmitter
(Connected to control output of external device)

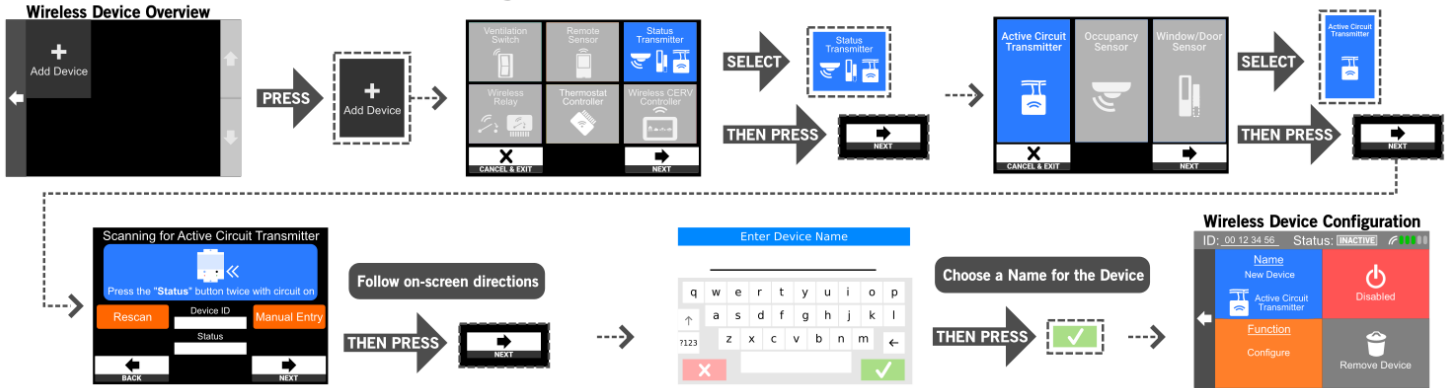


CERV2 Setup

Wireless Device Setup



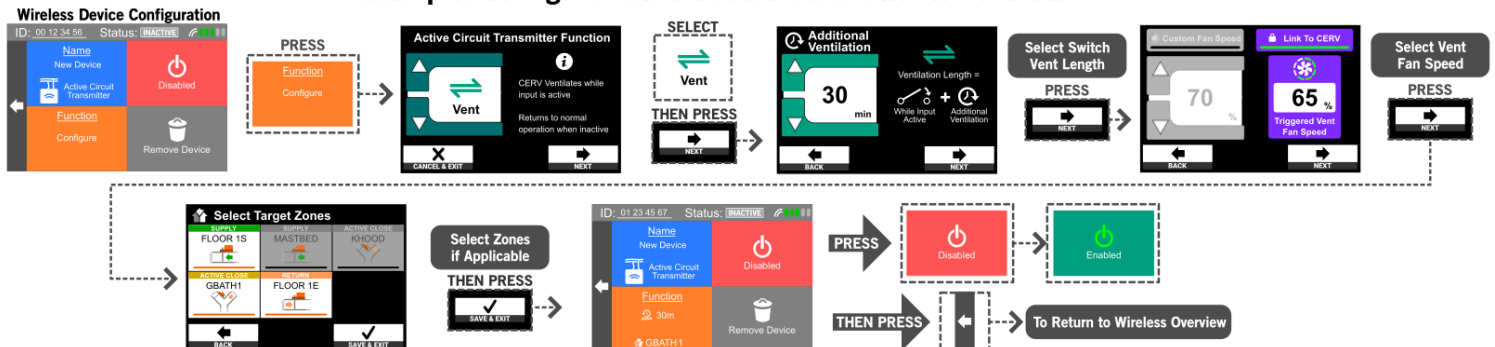
Adding A New Active Circuit Transmitter



Available Active Circuit Transmitter Functions



Example: Configure Active Circuit Transmitter to Ventilate



Active Circuit Transmitter with Current Sensing Relay

In some cases, directly wiring Build Equinox's Active Circuit Transmitter wireless option to a vent hood, dryer, or electric load is not possible or desired. For this scenario, a Current Sensing Relay may be used in combination with the Active Circuit Transmitter, allowing the Active Circuit Transmitter to trigger the CERV to ventilate when the monitored appliance reaches a current threshold (set on the current sensing relay). An example Current Sensing Relay is specified below, but any comparable one may be used. Build Equinox does not sell this component.

Parts specified: Current Sensing Relay: Hilitand SZC23 No AL-CH Model – [Product Link](#)

If line voltage is not accessible from the appliance, a separate 24VAC transformer may be used along with the 24VAC/24VDC Active Circuit Transmitter. In this case, the Current Sensing Relay switches one of the lines from the transformer to the ACT when the set current limit has been reached.

