



MAINTENANCE GUIDE

CERV2-8EC



Build Equinox
support@buildequinox.com
(773)-492-1893

Rev 2.0 - 09/05/2025

© Build Equinox 2025

Overview

The CERV2 has several recommended maintenance items to ensure the health and performance of the system. The maintenance items are detailed on the following pages of this guide. Regular maintenance should be performed approximately every 90 days.

Contents

Overview	2
Service Log	3
Filters	4
Check / Clean Exterior Vents	7
Condensate Trap Cleaning.....	8
Condensate Drain Cleaning - Tablets	9

Filters

The CERV2 contains filters for both incoming fresh air from outside and return air from inside. The filters can be easily accessed by unscrewing the top two thumb-screws and removing the top filter access cover. When replacing the filters, care should be made not to drop any object into the openings.

The CERV2 comes standard with two MERV 13, 10"x20"x1" filters. Any 10"x20" filter 1" or 2" thick can be used, although using filters higher than MERV 13 can cause higher fan power for little gain in filtration. Ensure that the filter direction corresponds to the airflow direction sticker on the inside of the CERV (points down). Filters should be replaced at least every 90 days, but indoor and outdoor particulate levels may necessitate more frequent changing. The inside and outside filters may also have different changing schedules. The return air filter may need less frequent changing than the fresh air filter.

Regular filter maintenance is important in keeping the inside air healthy and free from particulates as well as allowing for peak system operating efficiency.

Approximate working time: 10 minutes



CERV OEM Filter Store

Keep your air filtered and healthy all year long!

MERV 13
CERV

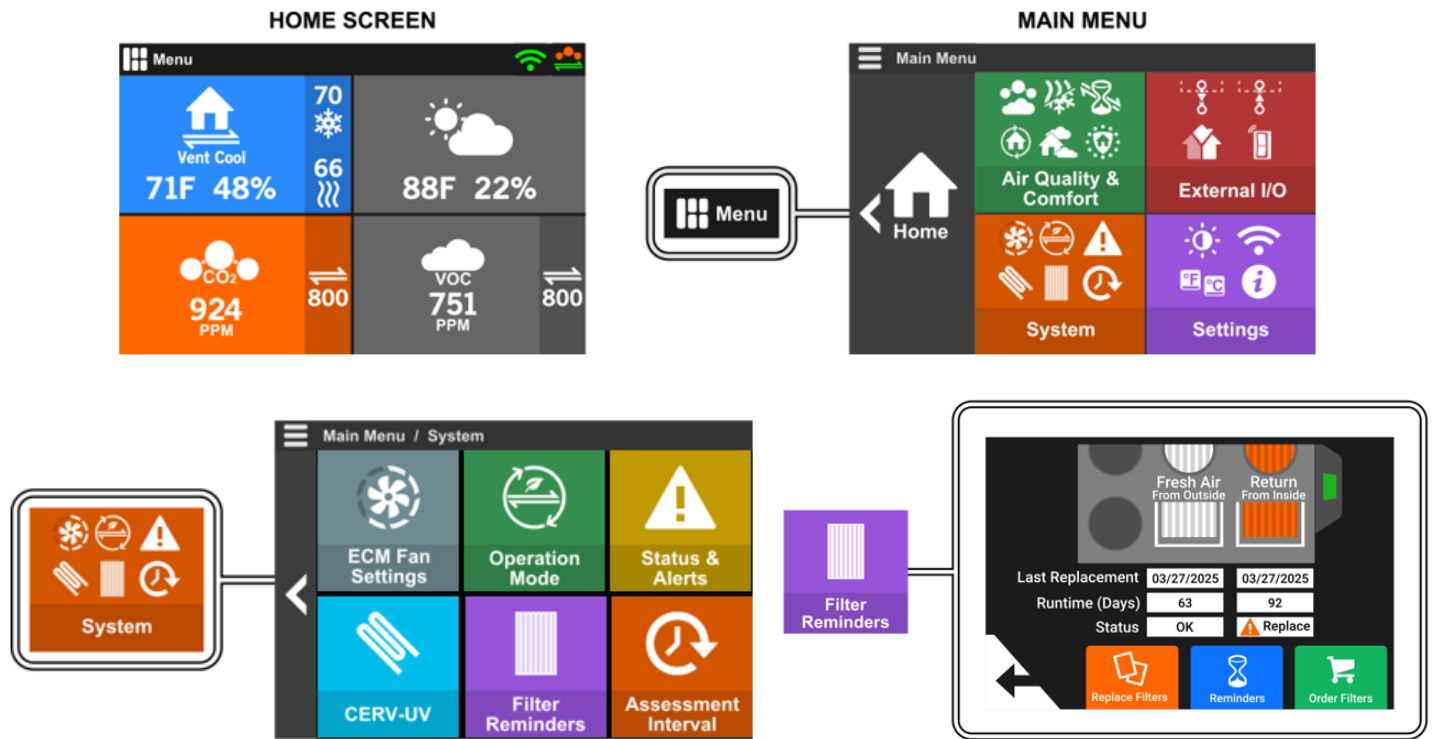
MERV 13 + CARBON
CERV

MERV 7
Colorfil

MERV 7
GEO-BOOST

OEM CERV filters can be purchased at www.buidequinox.com/store/

Touchscreen Controller – Changing Filters

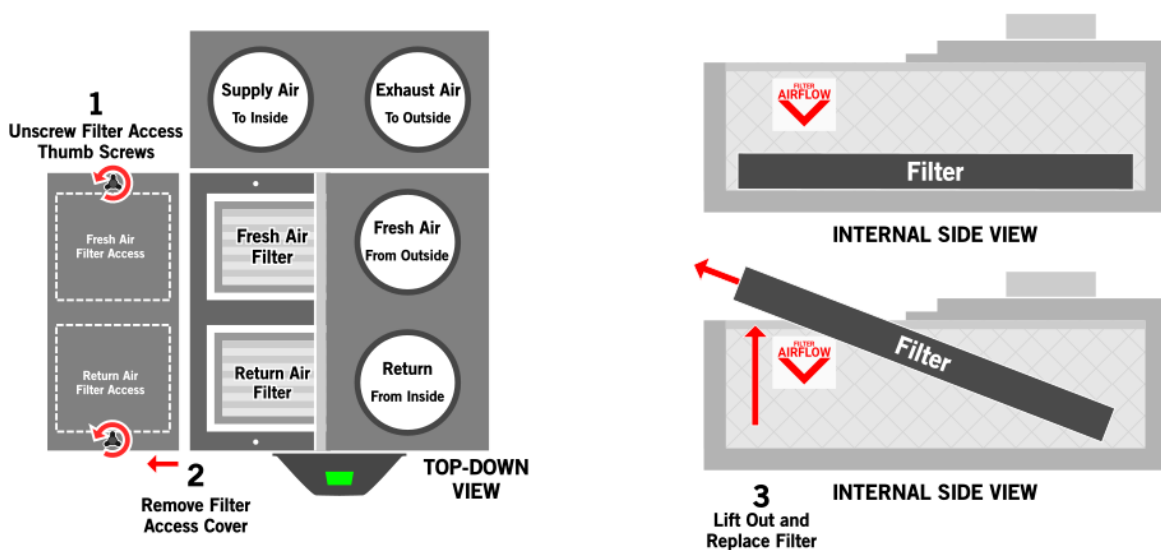


Press the “Replace Filters” button to begin the filter replacement procedure. The screen will walk you through the process. At the end, input the current date.



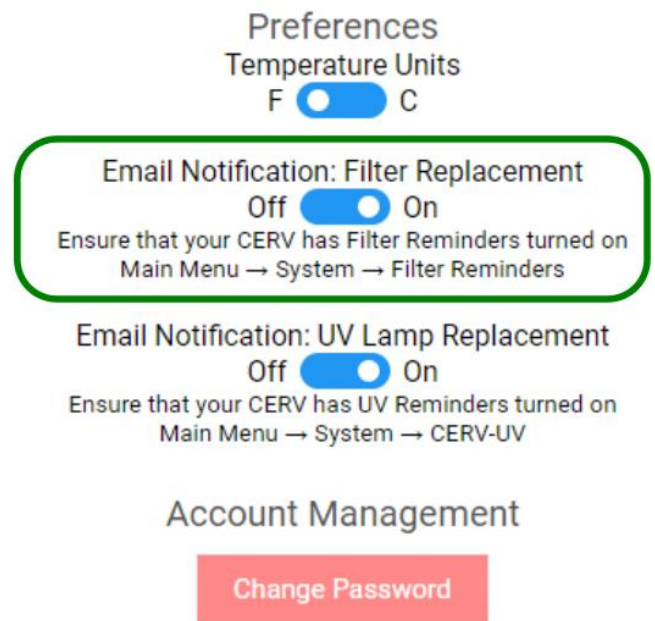
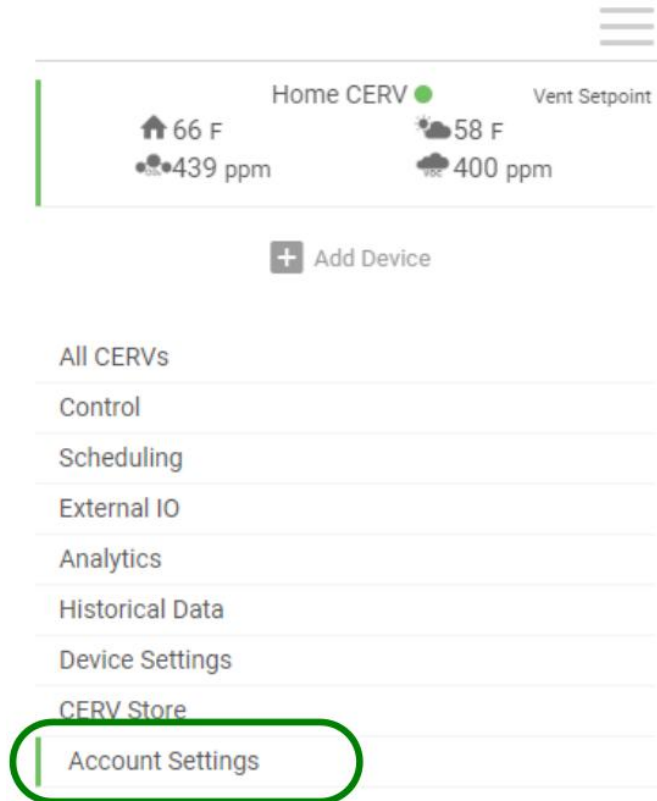
Press the “Reminders” to configure the frequency of filter notifications on your CERV

Accessing Filters for Replacement



Filter Email Notifications

If your CERV is connected online, you can choose to receive a notification when it is time to replace your filter. Through the CERV-ICE app, select Account Settings, then enable Email Notification: Filter Replacement. When the CERV has determined that it is time to replace the filter (interval configured from the touchscreen's Filter Reminders), the email address associated with the CERV-ICE account will receive an email notification with link to the online store to order replacement filters.



Check / Clean Exterior Vents

Periodically, it is important to check the two exterior vent fixtures (Fresh Air Inlet and Stale Air Exhaust) to ensure that they are free from obstructions such as debris, plant matter, or lint. Wall vents to the outside must use a coarse screen or mesh to prevent insects, birds, etc. from entering, but fine screens, dampers, flaps, etc. should be removed to eliminate any restrictions.

It is recommended to check and clean the exterior vents every time the filters on the system are changed.



Condensate Trap Cleaning

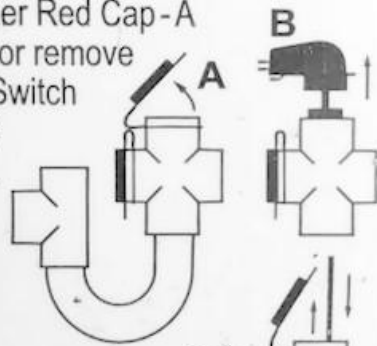
The CERV2 condensate drain should be cleaned as part of a routine maintenance schedule. In some homes, bacterial growth in the condensate drain may produce sludge that blocks water flow, and may cause water overflow from the unit. The CERV2 comes with an EZ-Trap, providing a convenient way to view the condition of the drain, as well as a simple method to clean it. The EZ-Trap kit includes a flexible brush and cleanout ports to allow the trap and connected pipe to be cleaned.

CLEANING INSTRUCTIONS FOR ALL MODEL 100, 200 & 300 SERIES EZ-TRAP

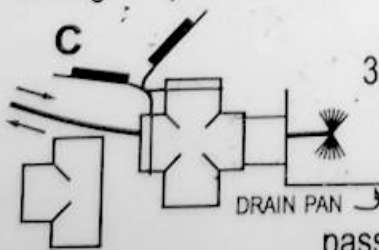
(Not applicable to Model 150, 160, 250 & 260)

For optimum performance, trap and drain pan outlet should be cleaned at regular intervals, particularly during summer.

1. Open Upper Red Cap - A (100 series) or remove Black Float Switch Assembly - B (200 series).

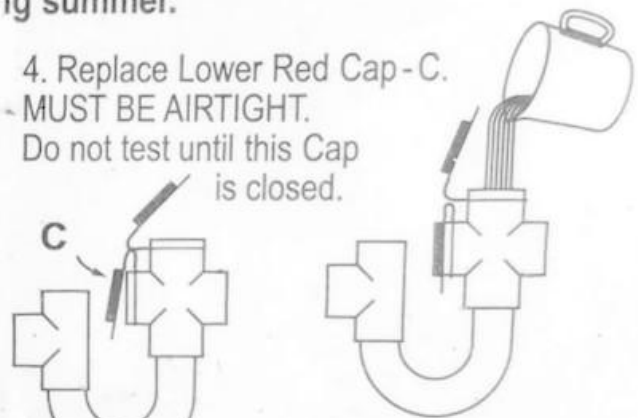


2. Insert Brush into open top of cross, push down through trap, then remove.



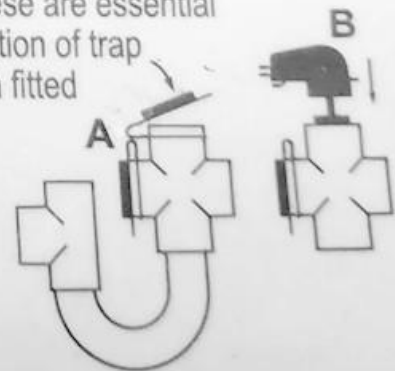
3. Open Lower Red Cap - C. Insert Brush so that it passes into drain inside A/C unit, then remove.

4. Replace Lower Red Cap - C. MUST BE AIRTIGHT. Do not test until this Cap is closed.



5. Check Trap for proper operation by pouring water into opening.

6. Replace Upper Red Cap - A (100 series) or Black Float Switch Assembly - B (200 series). These are essential for correct operation of trap and must remain fitted during normal operation.



Condensate Drain Cleaning - Tablets

The CERV2 condensate drain should be cleaned as part of a routine maintenance schedule. In some homes, bacterial growth in the condensate drain may produce sludge that blocks water flow, and may cause water overflow from the unit. Air conditioner “Pan Tablets” may be used to dissolve bacterial deposits and renew the drain piping. The CERV2 has two internal condensate drain pans – the season (heating/cooling) will dictate which drain pan to add the tablet to.

Approximate working time: 10 minutes

Parts Needed



Air Conditioner Pan Tablets

Cooling Season Condensate Drain Pan

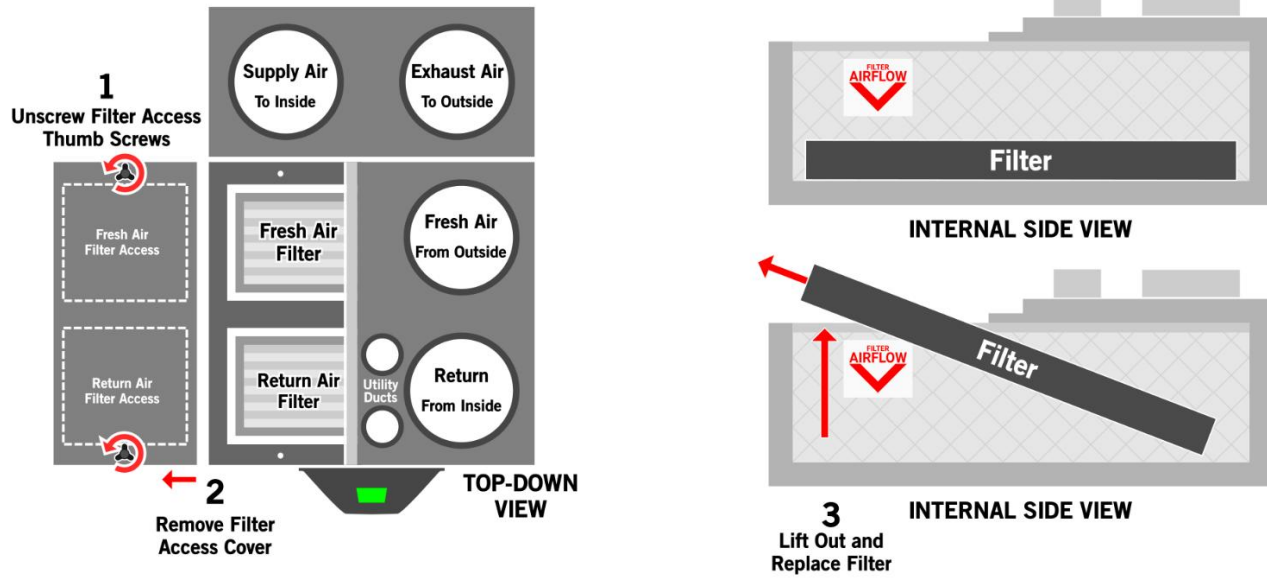
The following instructions describe how to add the pan tablet into the drain pan used when the CERV is actively cooling the home. Instructions for the Heating Season condensate drain pan may be found after this section.

Step 1: Set Operation Mode to OFF

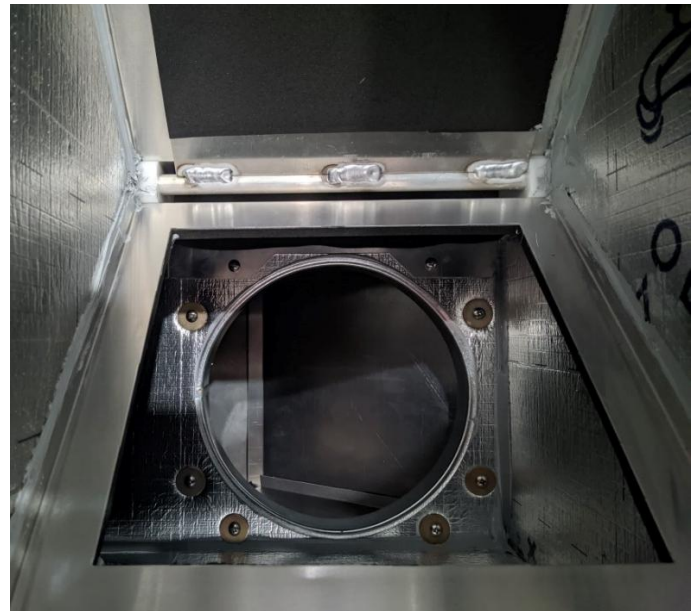
Use the touchscreen controller on the front of the CERV2 to set the CERV2’s operation to “Off”. Navigate with the following screen sequence:



Step 2: Remove Filter Cover

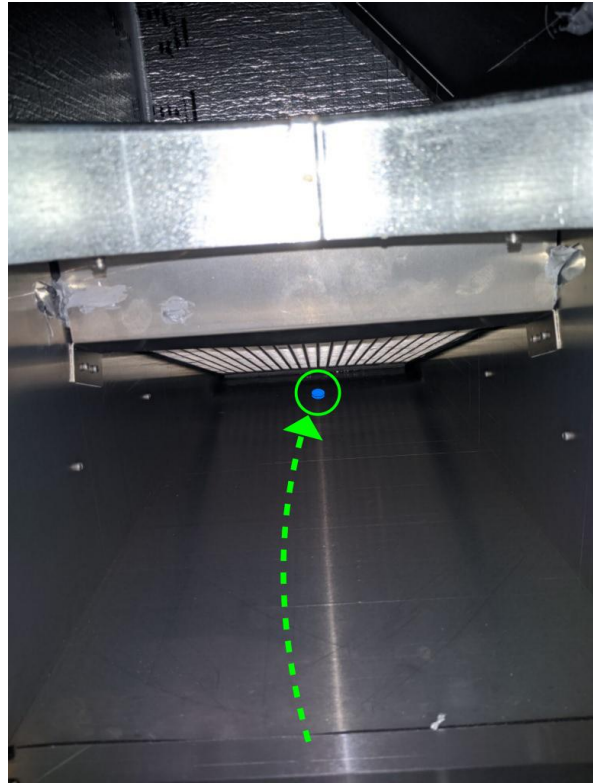
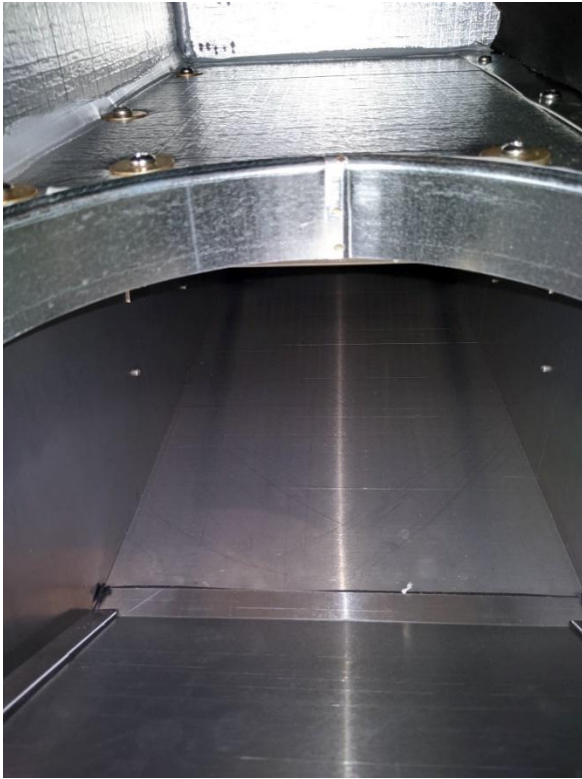


Unscrew the filter access thumb screws on the top of the CERV2, and set the Filter Access Panel aside. Remove the Return Air Filter (closest to the front of the unit), and set aside. Removal of the Fresh Air Filter is not necessary.



With the filter removed, the round opening to the bottom heat exchanger section is visible.

Step 3: Add the Tablet



Take one of the tablets, reach your hand down into the round opening, and toss the tablet towards the back of the unit (as far to the back as possible).

Step 4: Add Water

Pour 1 or more cups of water (8oz) through the round opening. The water should run towards the tablet at the back of the unit.

Tablet Addition Complete

Re-insert the CERV's filter, screw in the filter access panel, then return the CERV to On.

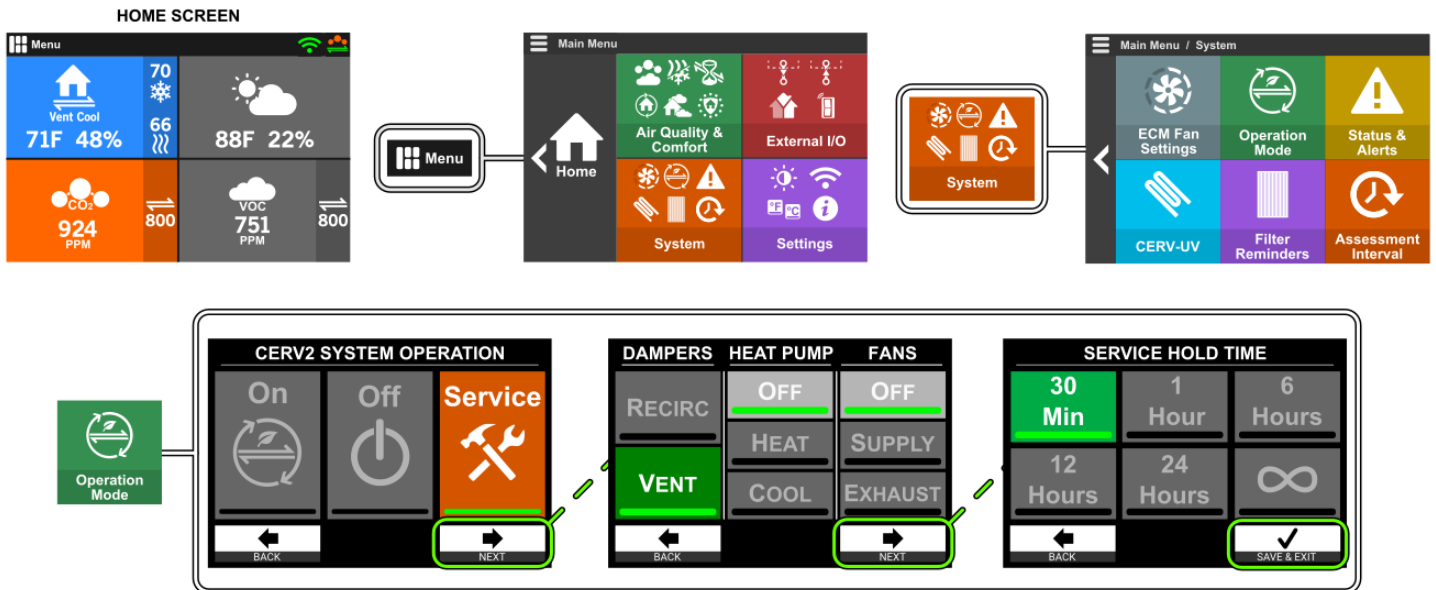


Heating Season Condensate Drain Pan

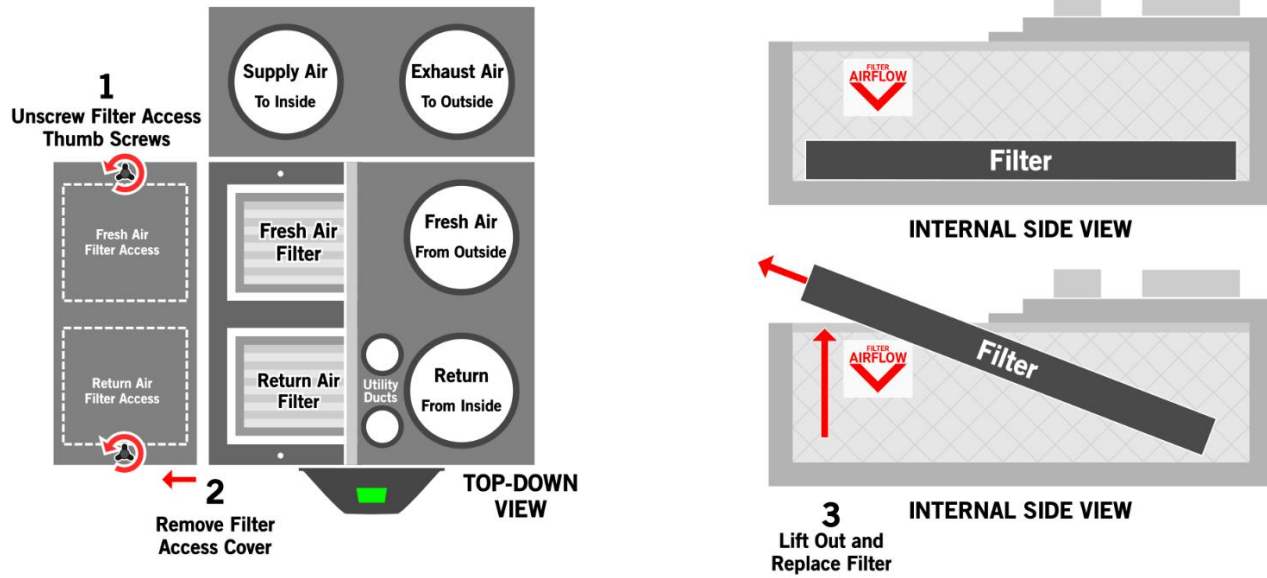
The following instructions describe how to add the pan tablet into the drain pain used when the CERV is actively heating the home. Instructions for the Cooling Season condensate drain pain may be found at the beginning of the document.

Step 1: Change Damper Position to Access Drain Pan

In order to access the condensate drain pan for Heating Mode, the inlet damper must be moved out of the way. To achieve this, go to Operation Mode, then select Service Mode. Set the Dampers to Vent, Heat Pump Off, and Fans Off and press the forward arrow. Finally, choose "30 Min", and press the check box.



Step 2: Remove Filter Cover

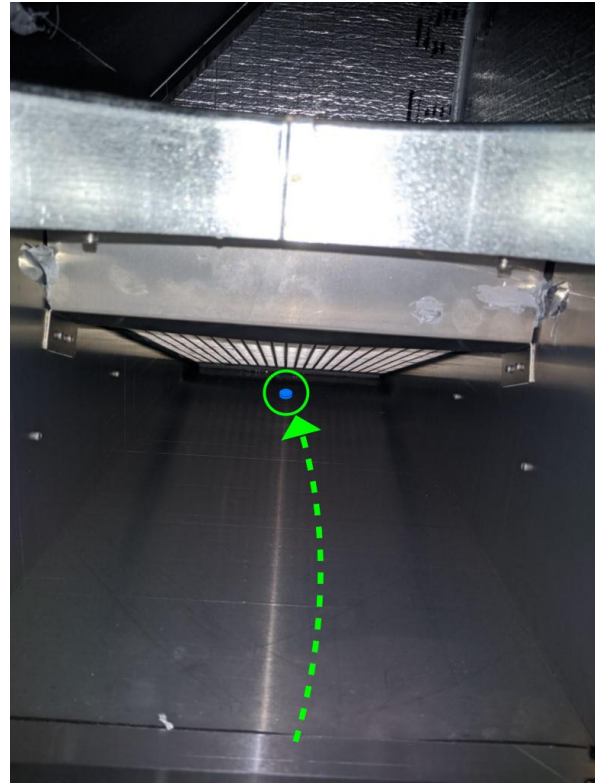
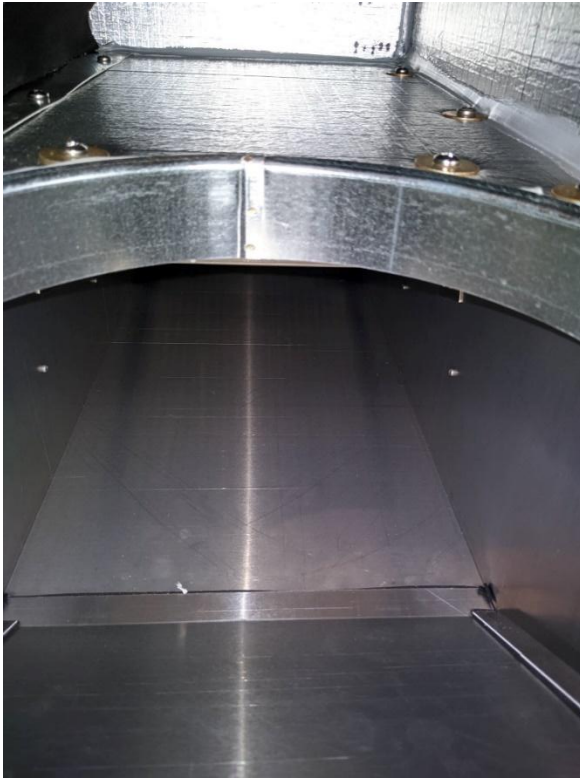


Unscrew the filter access thumb screws on the top of the CERV2, and set the Filter Access Panel aside. Remove the Return Air Filter (closest to the front of the unit), and set aside. Removal of the Fresh Air Filter is not necessary.



With the filter removed, the round opening to the bottom heat exchanger section is visible.

Step 3: Add the Tablet



Take one of the tablets, reach your hand down into the round opening, and toss the tablet towards the back of the unit (as far to the back as possible).

Step 4: Add Water

Pour 1 cup of water (8oz) through the round opening. The water should run towards the tablet at the back of the unit.

Tablet Addition Complete

Re-insert the CERV's filter, screw in the filter access panel, then return the CERV to On.

