

Adding Condensate Drain Pan Tablets to CERV2

The CERV2 condensate drain should be cleaned as part of a routine maintenance schedule. In some homes, bacterial growth in the condensate drain may produce sludge that blocks water flow, and may cause water overflow from the unit. Air conditioner “Pan Tablets” may be used to dissolve bacterial deposits and renew the drain piping. The CERV2 has two internal condensate drain pans – the season (heating/cooling) will dictate which drain pan to add the tablet to.

Approximate working time: 10 minutes

Parts Needed



Air Conditioner Pan Tablets

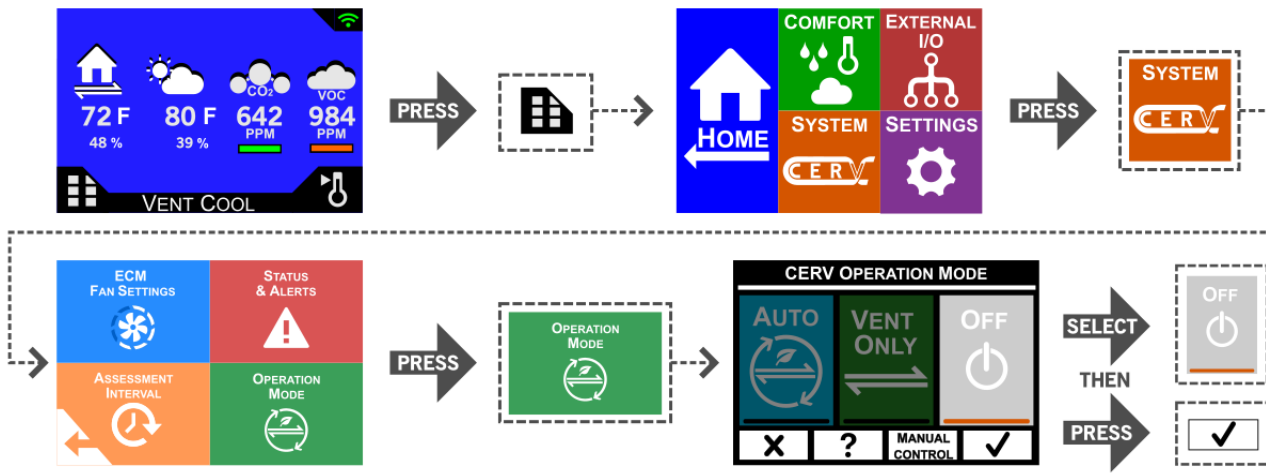
Cooling Season Condensate Drain Pan

The following instructions describe how to add the pan tablet into the drain pan used when the CERV is actively cooling the home. Instructions for the Heating Season condensate drain pan may be found after this section.

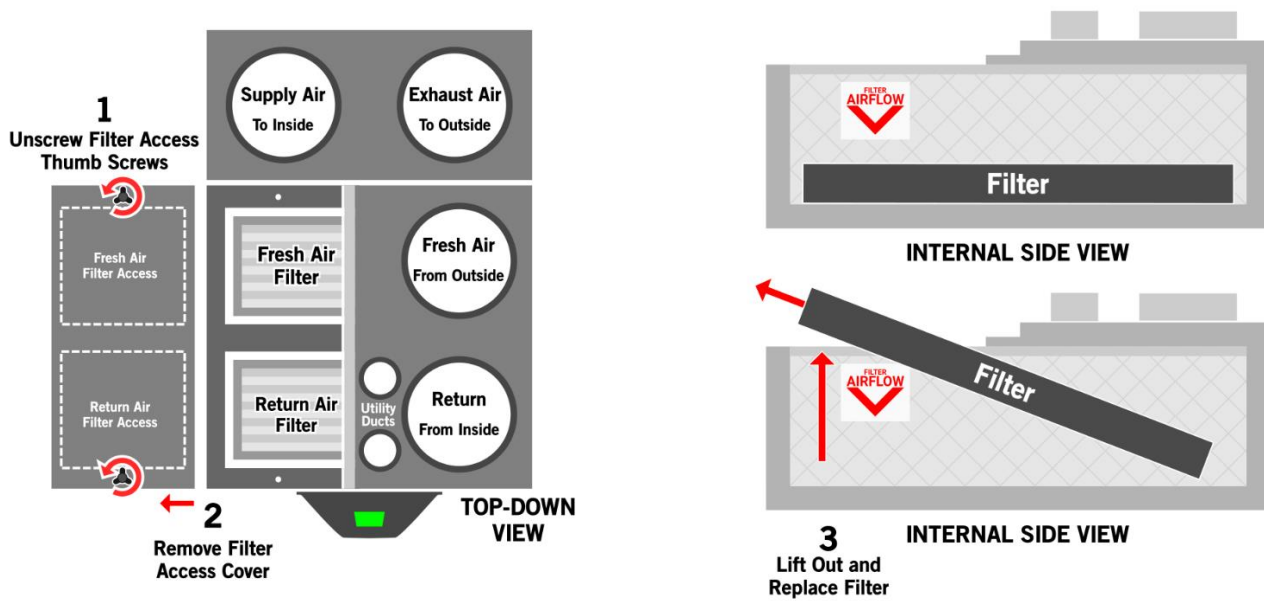
Step 1: Set Operation Mode to OFF



Use the touchscreen controller on the front of the CERV2 to set the CERV2’s operation to “Off”. Navigate with the following screen sequence:



Step 2: Remove Filter Cover

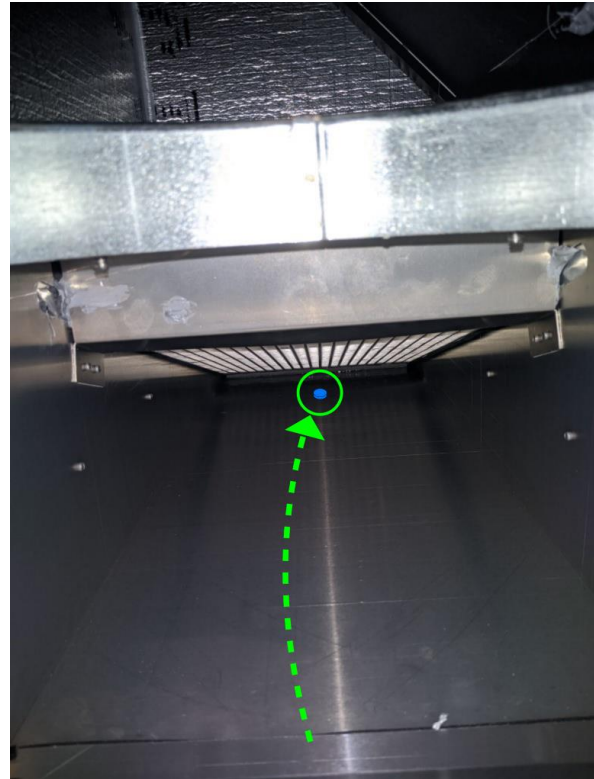
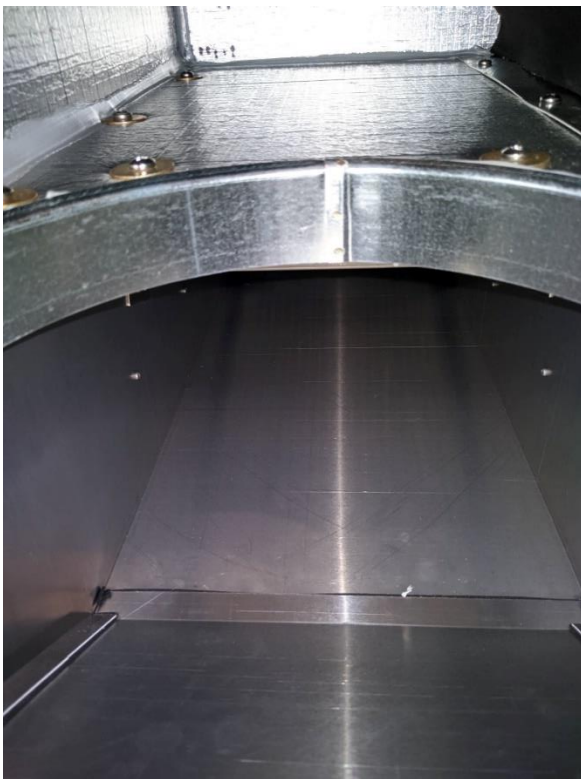


Unscrew the filter access thumb screws on the top of the CERV2, and set the Filter Access Panel aside. Remove the Return Air Filter (closest to the front of the unit), and set aside. Removal of the Fresh Air Filter is not necessary.



With the filter removed, the round opening to the bottom heat exchanger section is visible.

Step 3: Add the Tablet



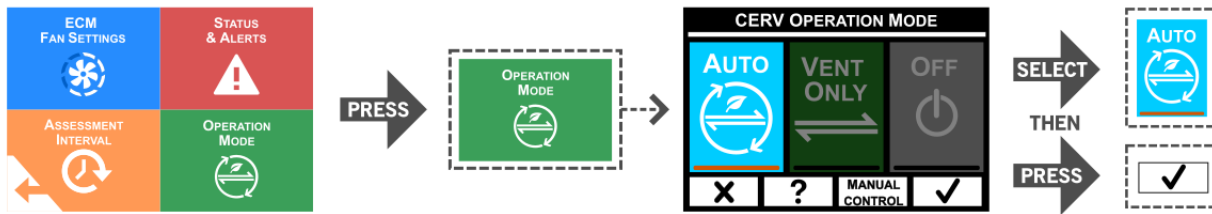
Take one of the tablets, reach your hand down into the round opening, and toss the tablet towards the back of the unit (as far to the back as possible).

Step 4: Add Water

Pour 1 or more cups of water (8oz) through the round opening. The water should run towards the tablet at the back of the unit.

Tablet Addition Complete

Re-insert the CERV's filter, screw in the filter access panel, then return the CERV to Auto mode.



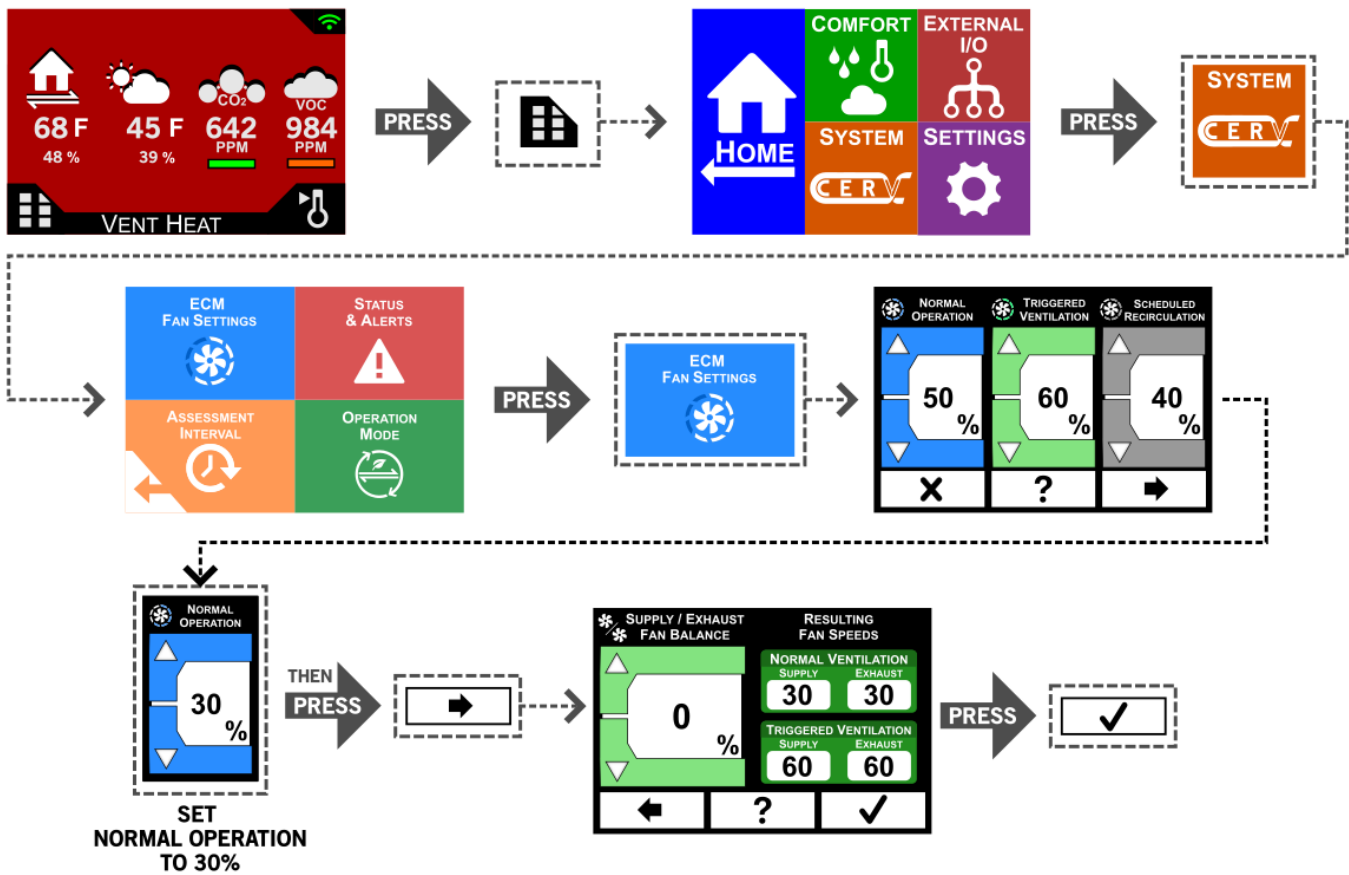
Heating Season Condensate Drain Pan

The following instructions describe how to add the pan tablet into the drain pan used when the CERV is actively heating the home. Instructions for the Cooling Season condensate drain pan may be found at the beginning of the document.

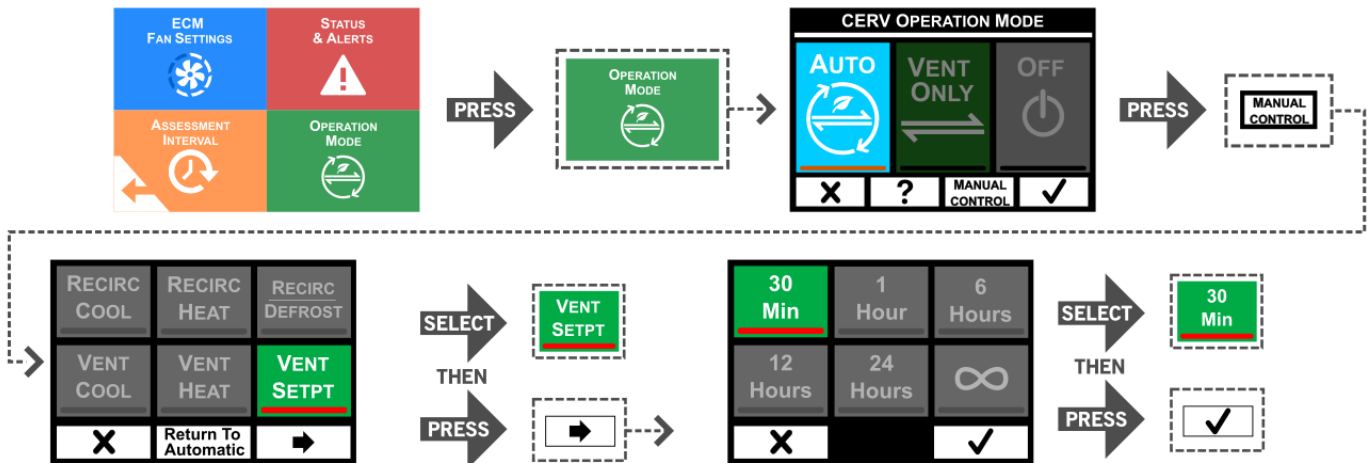
Step 1: Lower Fan Speed



Use the touchscreen controller on the front of the CERV2 to set the CERV2's fan speed to 30%. Navigate with the following screen sequence (note the current fan speed setting, so it can be reset later).

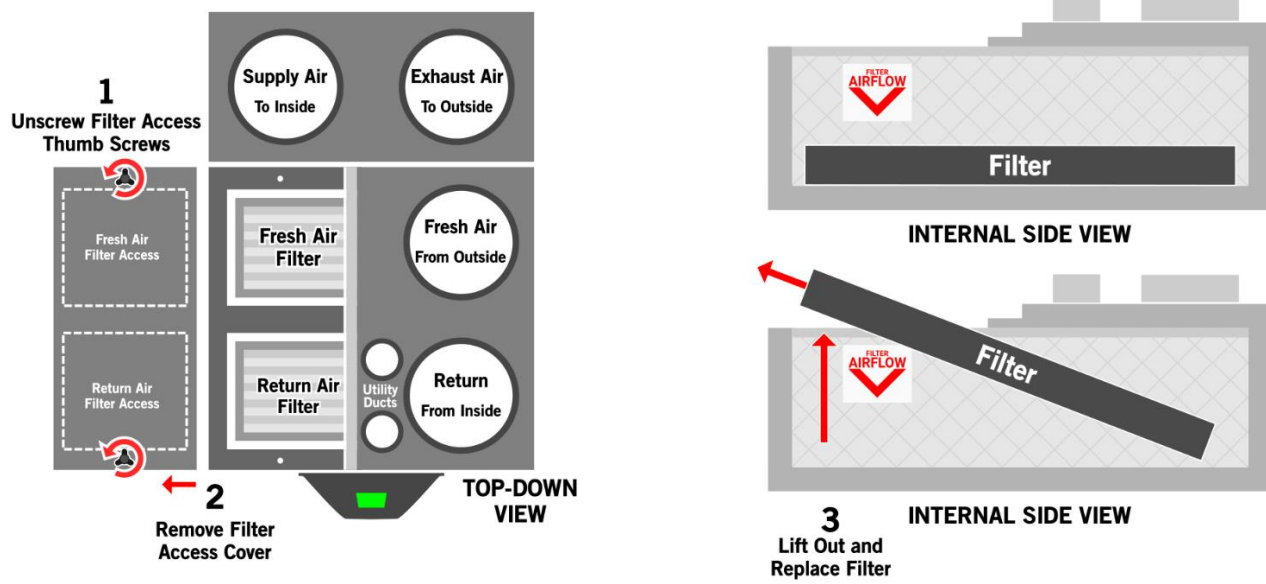


Step 2: Set the CERV2 to Ventilation Setpoint Mode



In order to access the condensate drain pan for Heating Mode, the inlet damper must be moved out of the way. To achieve this, go to Operation Mode, then click Manual Control. Select “Vent Setpt” and press the forward arrow. Finally, choose “30 Min”, and press the check box.

Step 3: Remove Filter Cover

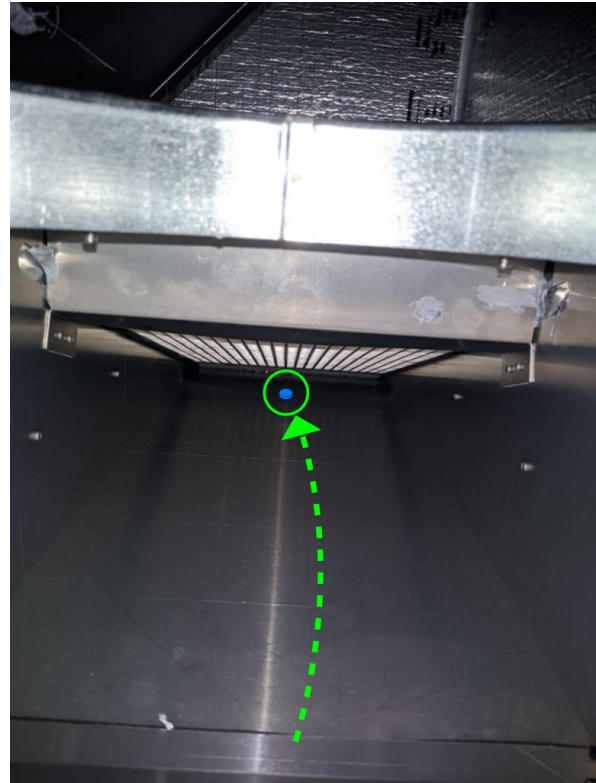
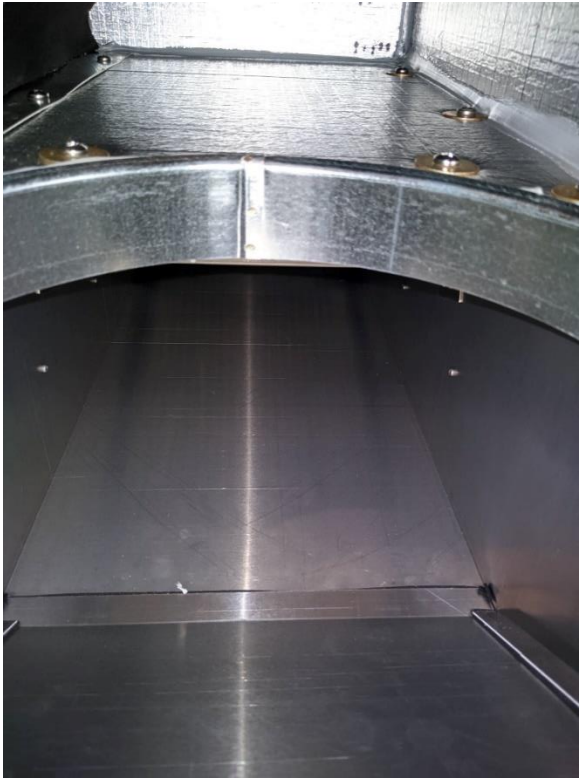


Unscrew the filter access thumb screws on the top of the CERV2, and set the Filter Access Panel aside. Remove the Return Air Filter (closest to the front of the unit), and set aside. Removal of the Fresh Air Filter is not necessary.



With the filter removed, the round opening to the bottom heat exchanger section is visible.

Step 4: Add the Tablet



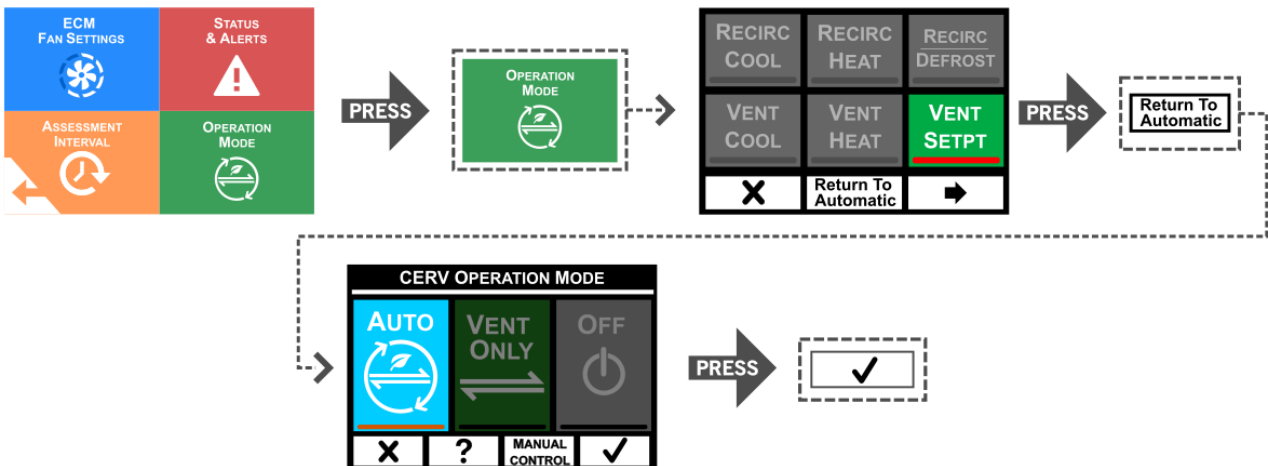
Take one of the tablets, reach your hand down into the round opening, and toss the tablet towards the back of the unit (as far to the back as possible).

Step 5: Add Water

Pour 1 cup of water (8oz) through the round opening. The water should run towards the tablet at the back of the unit.

Tablet Addition Complete

Re-insert the CERV's filter, screw in the filter access panel, then return the CERV to Auto mode.



Additionally, return to the ECM Fan Settings menu, and set the Normal Operation fan speed to the original setting.