

CERV-UV

ULTRAVIOLET AIR PURIFICATION

CERV-UV-int; Factory Installed Completion Instructions

Help reduce paper waste!



Download CERV-UV documents at:
<https://www.buildequinox.com/cerv-uv/manuals>
 or scan the QR code with your smartphone



Overview

This guide details completing installation for the CERV-UV, which has been **factory-installed internally** to the CERV2. The CERV-UV mounting bracket and power supply connector have been factory installed. Work remaining includes installing the UV lamp and reflector shield and connecting the external power supply. Read through instructions before attempting work to gain an understanding of the installation process.

Contact support@buildequinox.com or 773-492-1893 with any questions.

WARNING: The CERV2 must be unplugged before servicing the unit to prevent risk of electrocution. Once installed, the CERV will produce ultraviolet light – never look directly at the UV lamp, and unplug the UV power supply before changing air filters or performing service to avoid UV exposure.

Approximate working time: 20 Minutes

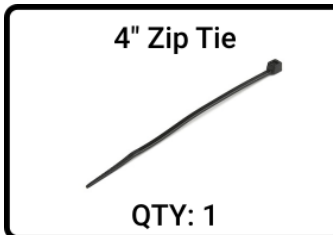
Contents

Tools Needed	2
Contents of CERV-UV Internal Kit:	2
Install the UV Lamp	3
Install the Panel Reflector	5
Remove Front Access Panels.....	6
Connect Power Supply	7
Setting CERV-UV Lamp Replacement Reminders	8

Tools Needed



Contents of CERV-UV Internal Kit:

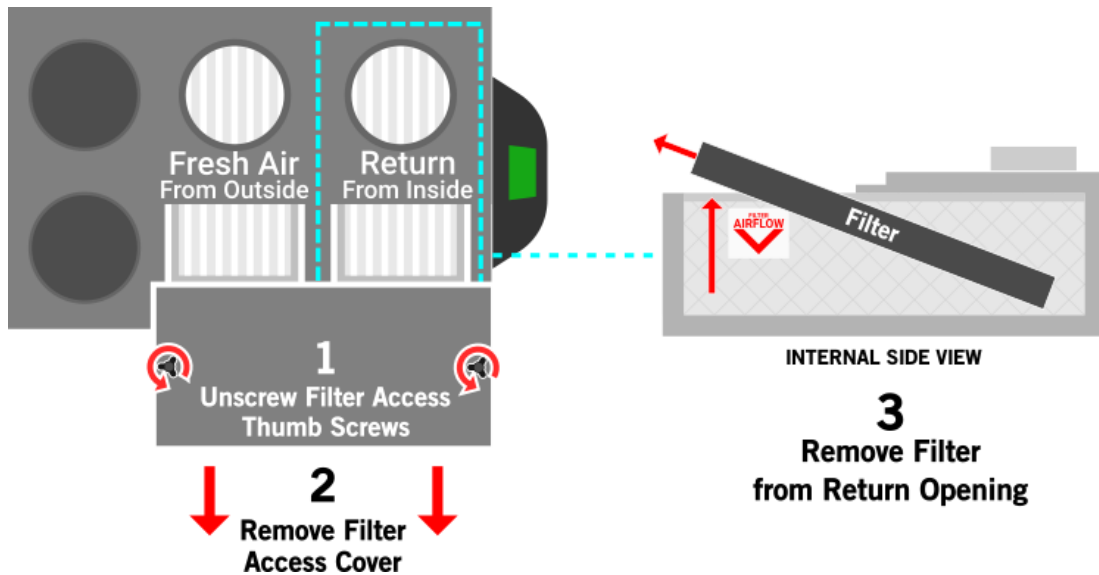


Before removing power to CERV as stated below, use touchscreen to navigate to the Main Menu -> CERV System -> Operation Mode to turn CERV into off mode. Wait 90 seconds for dampers to move into correct position, then proceed to turn power off to CERV.

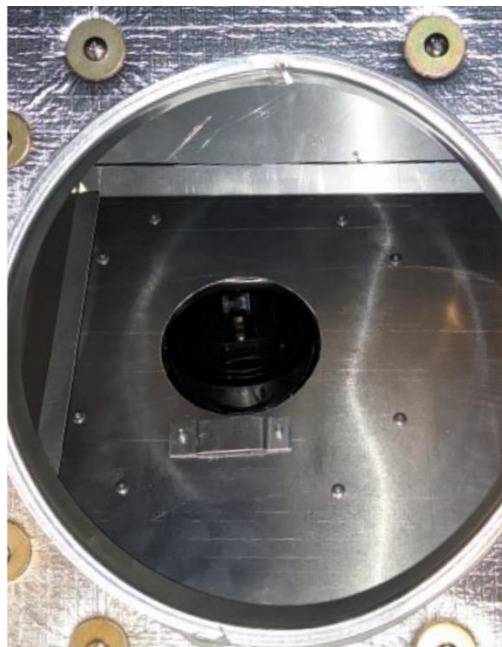


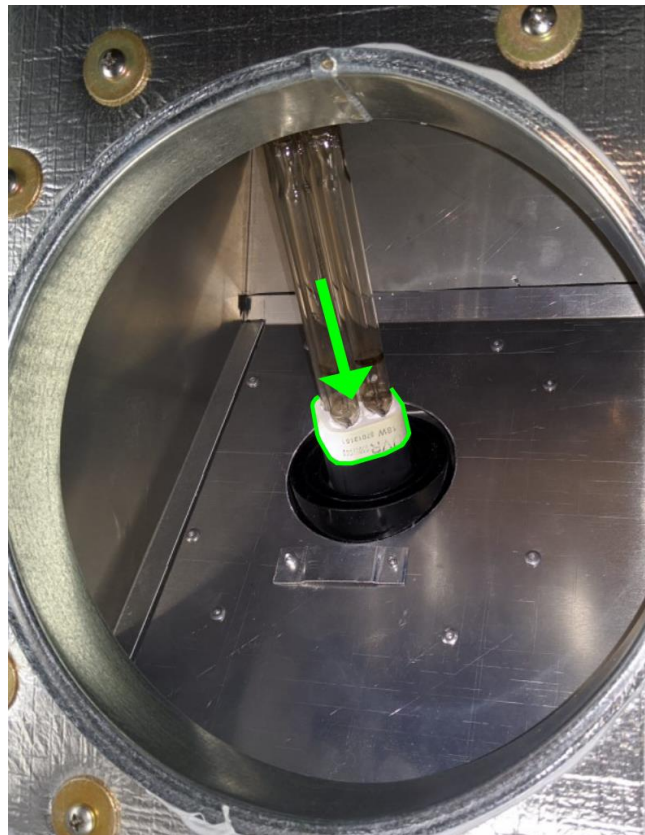
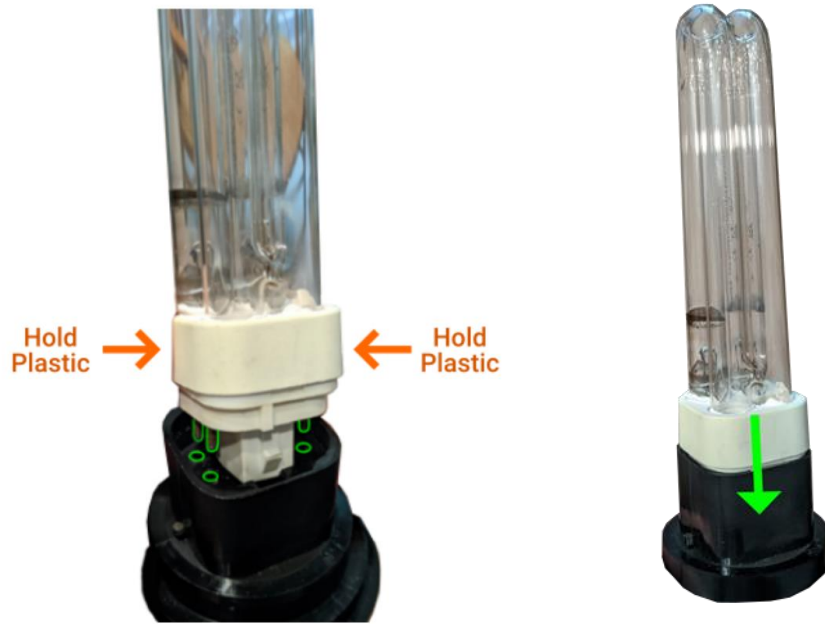
DANGER: Risk of electric shock. Can cause injury or death: disconnect all remote electric power supplies before servicing. Turn off CERV2 power switch and unplug cord from electrical outlet or turn off breaker.

Install the UV Lamp



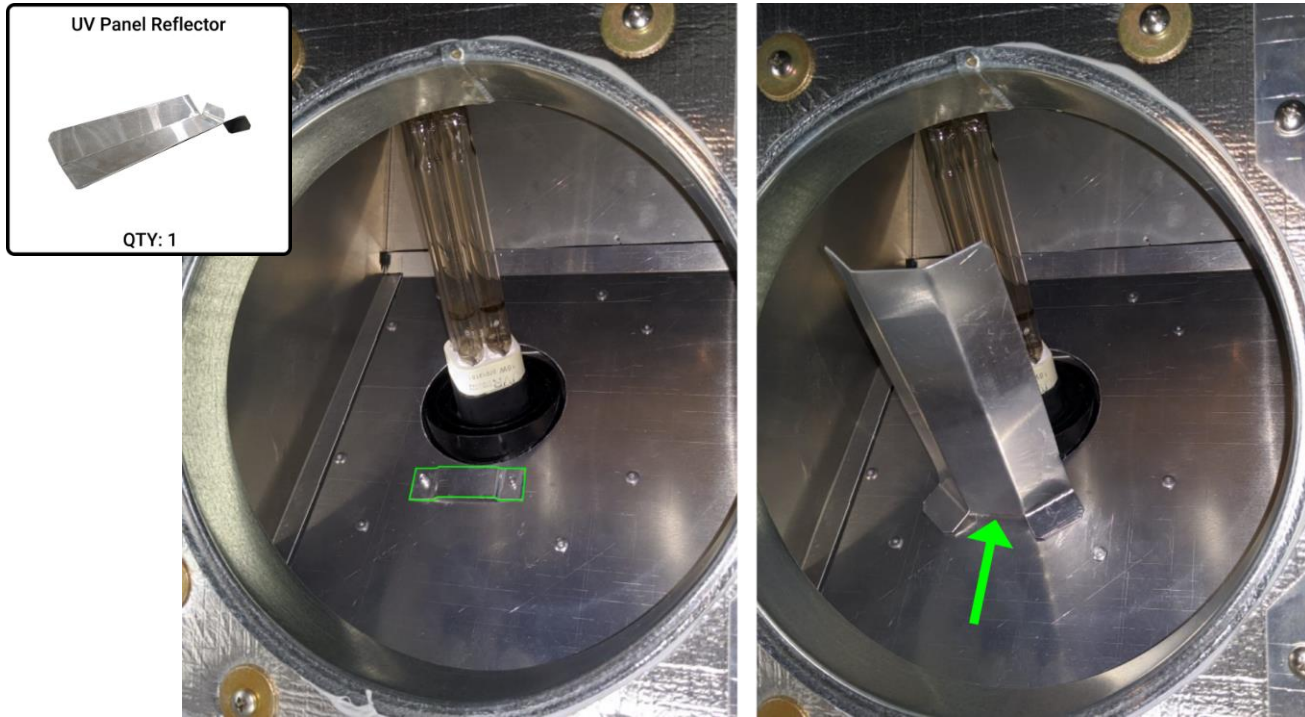
To install the lamp and panel reflector, you must first remove the CERV's top Filter Access panel, and then remove the filter from the return air opening. Looking down into the return opening, the circular lamp socket is visible.





DO NOT TOUCH THE LAMP GLASS WITH YOUR FINGERS. Holding the UV lamp by the white plastic base, insert into the UV mount, aligning the four metal pins with the matching holes.

Install the Panel Reflector

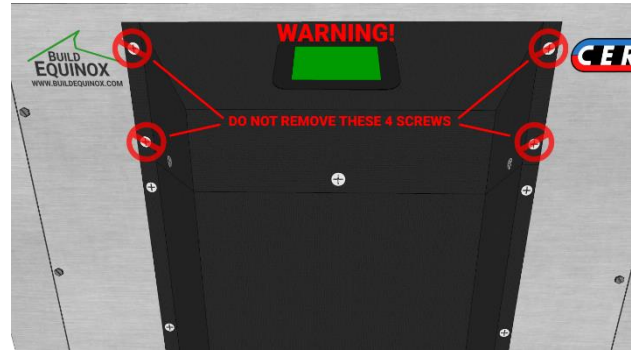


Slide the UV Panel Reflector into the raised tab above the UV lamp.

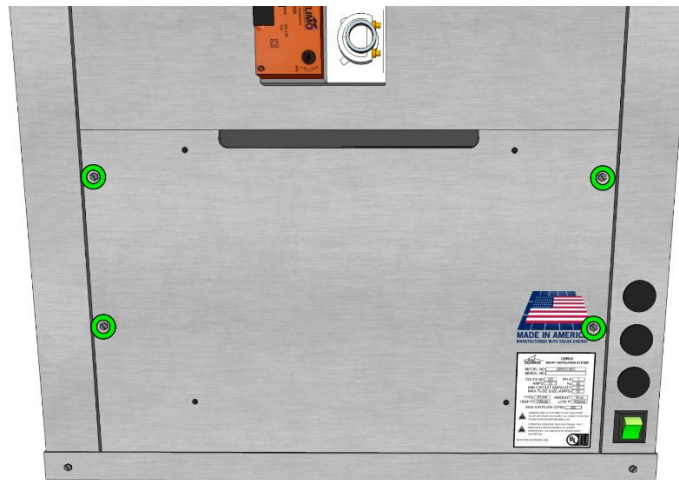
Re-insert the return air filter, and tighten filter access cover.

Installation of the lamp and reflector is now complete. Continue to the next section for installation of the UV lamp Power Supply.

Remove Front Access Panels

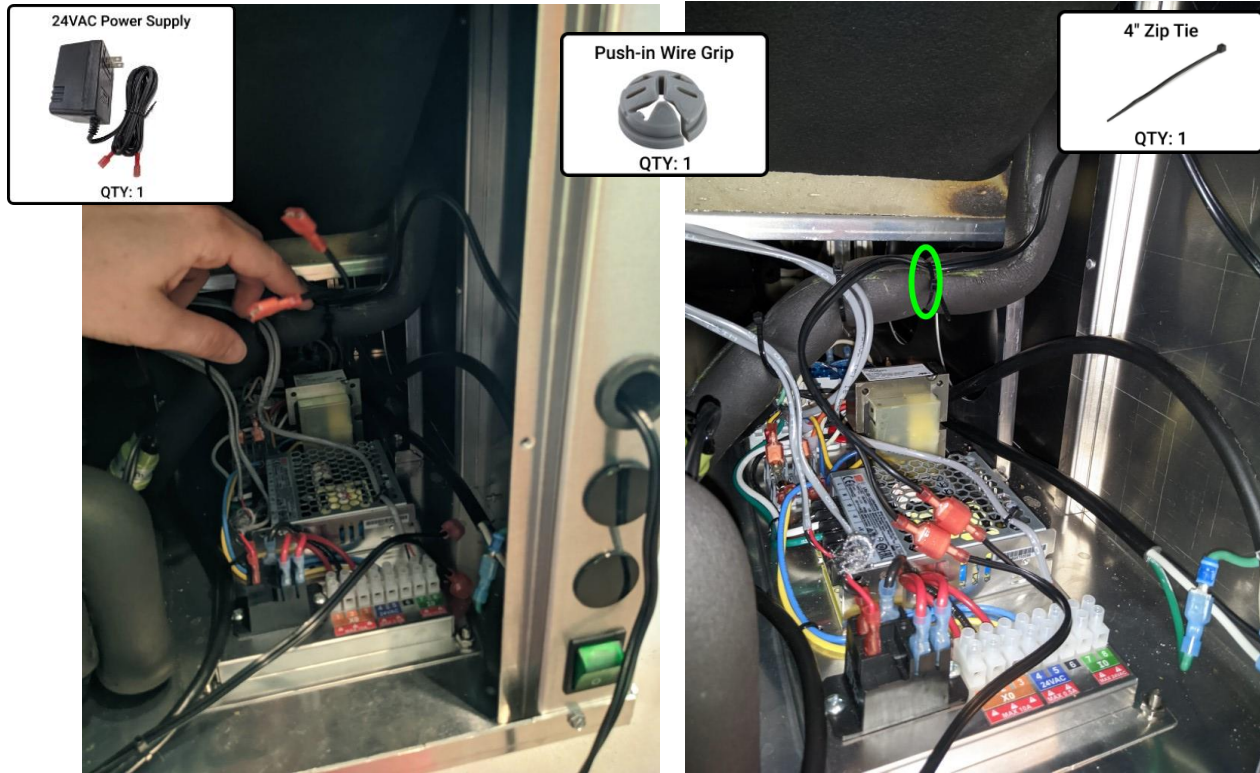


Remove the 13 black phillips head screws highlighted in green above, and set the lower black plastic housing aside.
NOTE: Do not remove the four phillips screws shown in red attaching the touchscreen housing to the CERV2. An electric screw driver can be used to remove screws, but screws should be installed by hand to avoid stripping threads.



Using the 1/4" driver, remove the four hex-head screws for the lower sheet metal access panel, highlighted in green. Slide out the panel, and set aside. If a CERV2 I/O Expansion board is located on this panel make notes about wire connections and then disconnect any wires to make removing panel possible.

Connect Power Supply

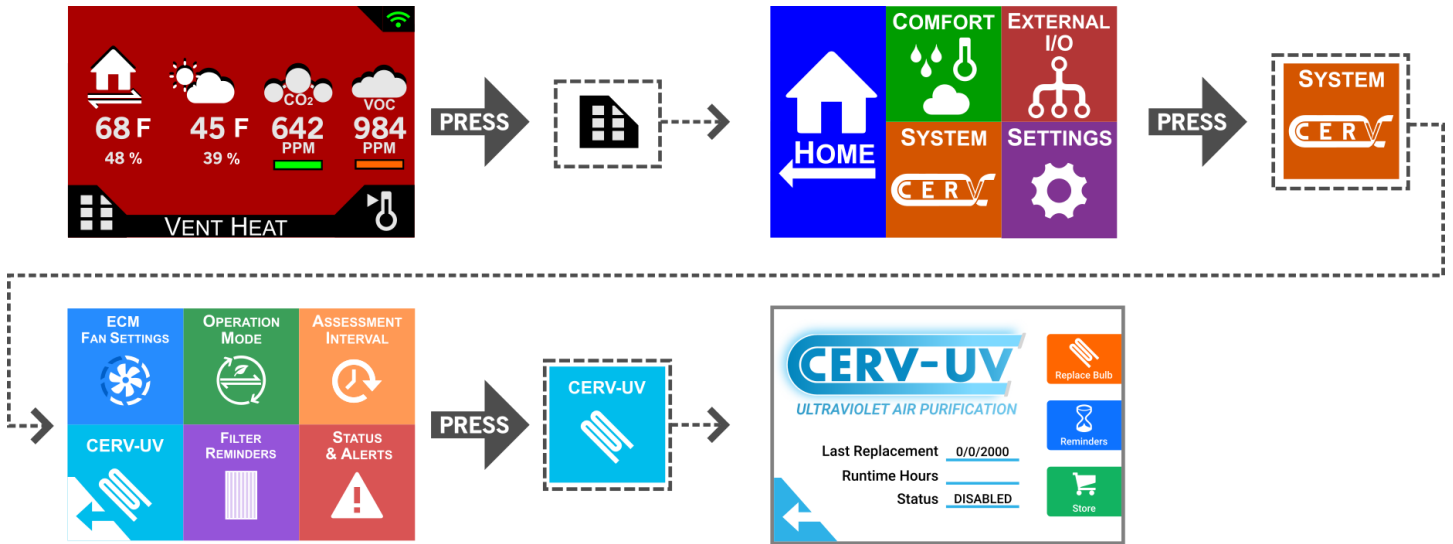


Feed the power supply harness (with the female connectors) through one of the CERV's 3/4" conduit holes, and plug into the lamp power supply connectors. Outside the CERV slide the power supply wire through the cord grip and then insert the push-in wire grip into the conduit hole. Make sure there is slack in the wire inside the CERV. Zip-tie the wire to the black insulated piping (picture on right).

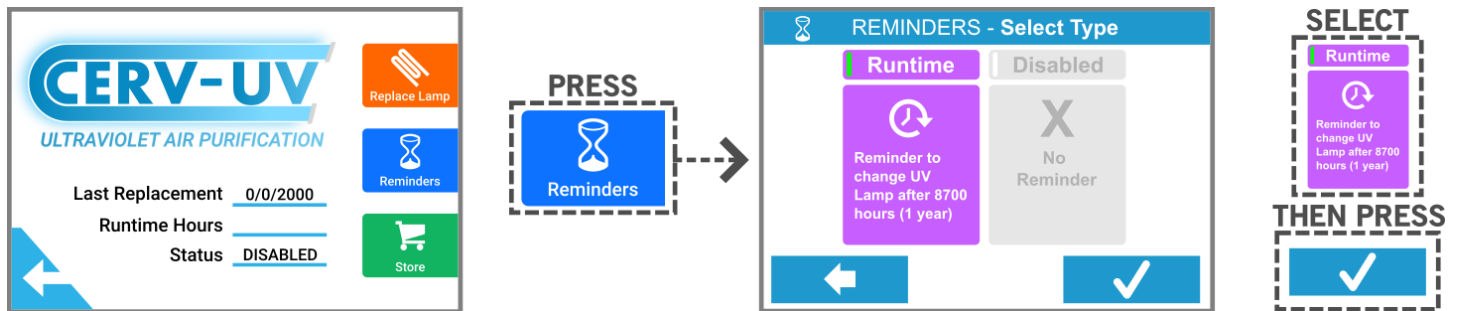
The UV lamp is now ready to be powered. Plug the power supply into an outlet and the UV lamp will light up. UV light is damaging to skin and eyes, so the UV light must be unplugged anytime the CERV is undergoing service that requires contact with the UV light. To see if the UV light is working the filter access cover can be removed to see if a blue glow is present. If so, the light is working, if not, check all electrical connections. Re-install the access panels.

Power can now be restored to the CERV and the power switch turned on. Set the operation mode back to auto. Proceed to the next page to set up the UV light

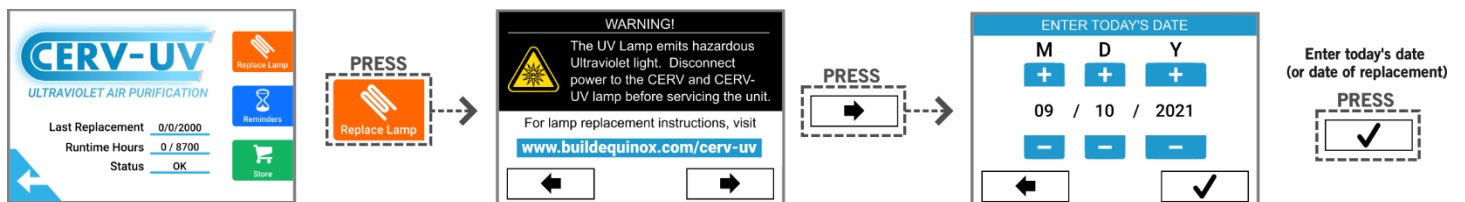
Setting CERV-UV Lamp Replacement Reminders



Follow the touchscreen controller path below to reach the CERV-UV overview screen.



Once the CERV-UV overview screen has been reached, press the Reminders Button, select Runtime, and press the check box. The CERV-UV lamp is rated for 8700 hours (1 year), so the CERV will monitor the operation time of the lamp and display a notification when it is time to replace.



Lastly, now that the lamp has been installed, you will set the current date. Press the Replace Lamp button and enter the date.